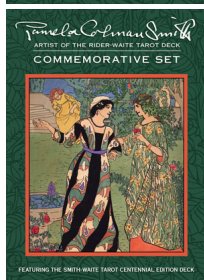
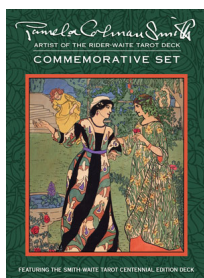


## Pamela Coleman Smith Commemorative Set



Celebrating the 100th Anniversary of the Rider-Waite Deck, the Pamela Colman Smith Commemorative set will be cherished by all tarot collectors and art lovers.

Rating: Not Rated Yet

**Price**

Salesprice with discount

Sales price \$43.95

Sales price without tax \$43.95

Tax amount

[Ask a question about this product](#)

### Description

Celebrating the 100th Anniversary of the Rider-Waite Deck, the Pamela Colman Smith Commemorative set will be cherished by all tarot collectors and art lovers.

The deluxe set includes the Smith-Waite Centennial Tarot Deck and two books; **The Artwork and Times of Pamela Colman Smith, by Stuart R. Kaplan**, with over 100 examples of her non-tarot art, and **The Pictorial Key to the Tarot by Arthur Edward Waite**, in a new format. **The Smith-Waite Centennial Edition Tarot Deck is reproduced from the original 1909 deck and comes with a 78-card deck with drawstring organza bag.**

The set also includes: **2 prints of Pamela Colman Smith**, one photo and one self-portrait, both 5" x 7" suitable for framing; **six color postcards of artwork by Pamela Colman Smith**; and **Spread Sheet Guide**. Everything is attractively packaged in a deluxe keepsake case.

## About Pamela Colman Smith

She was born February 16, 1878, in Middlesex, England to American parents. Her childhood years were spent between London, New York, and Kingston, Jamaica. During her teens, she traveled throughout England with the theatre company of Ellen Terry and Henry Irving. Thereafter, she began formal art training at the Pratt Institute of Brooklyn, graduating in 1897.

Although American by birth, she returned to England, where she became a theatrical designer for miniature theatre, and an illustrator -- mainly of books, pamphlets and posters.

Around 1903, she joined the Order of the Golden Dawn. In 1909, under the guidance of Arthur Edward Waite, she undertook a series of seventy-eight allegorical paintings described by Waite as a rectified tarot pack. The designs, published in the same year by William Rider and Son, exemplify the mysticism, ritual, imagination, fantasy, and deep emotions of the artist.

Pamela Colman Smith would all but be forgotten except for the seventy-eight tarot paintings known as the Rider-Waite Tarot pack. She would no doubt be astonished and gladdened to know that today the deck touches the hearts and emotions of millions of people.

### Reviews

There are yet no reviews for this product.